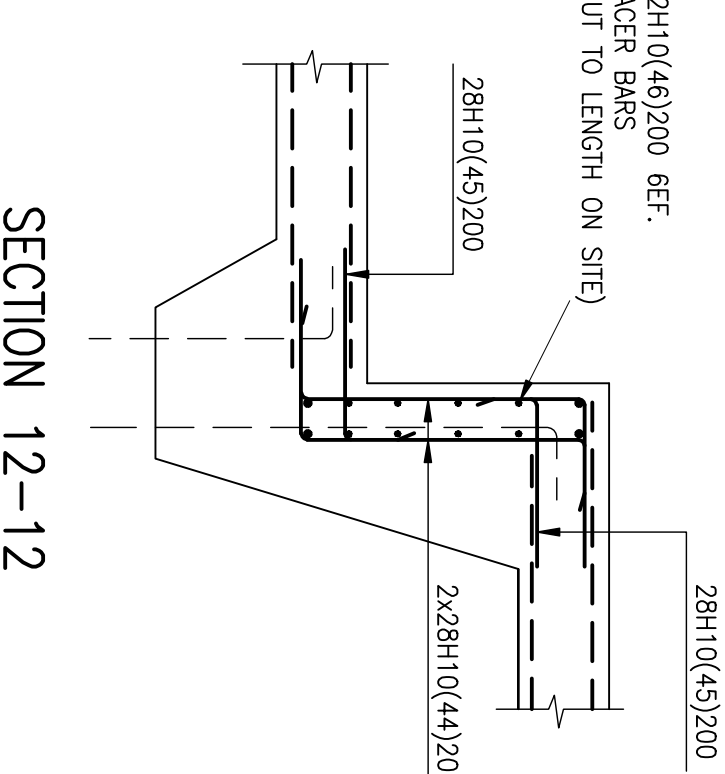
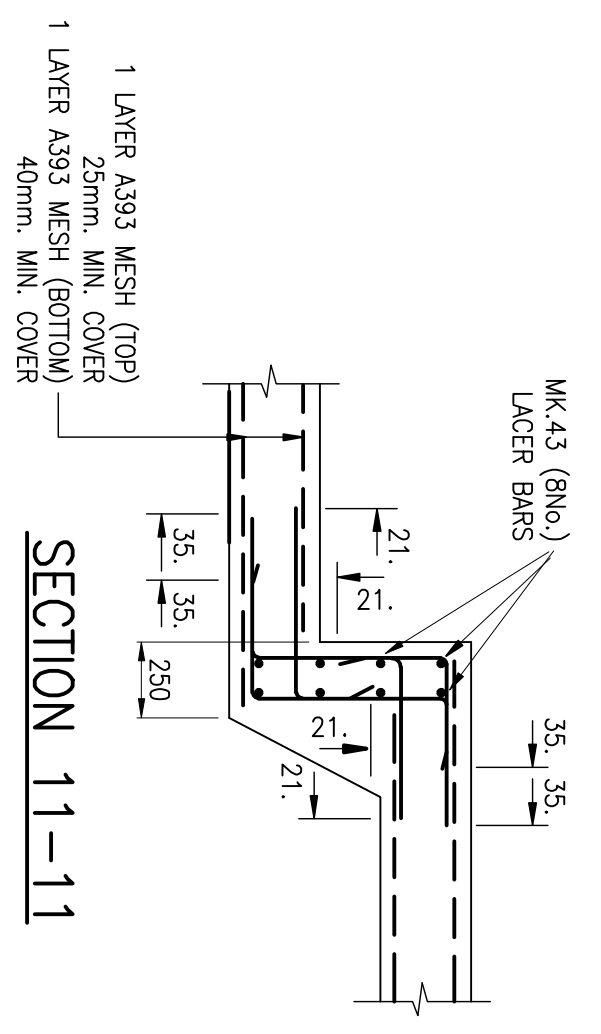
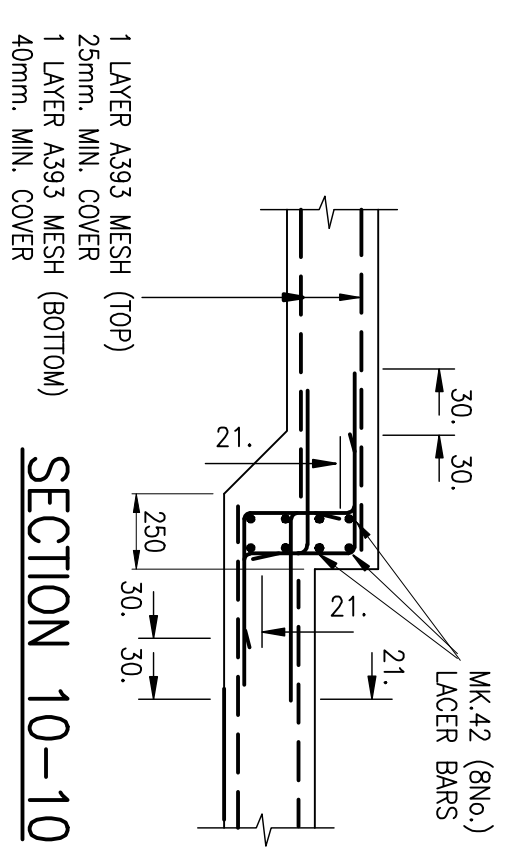
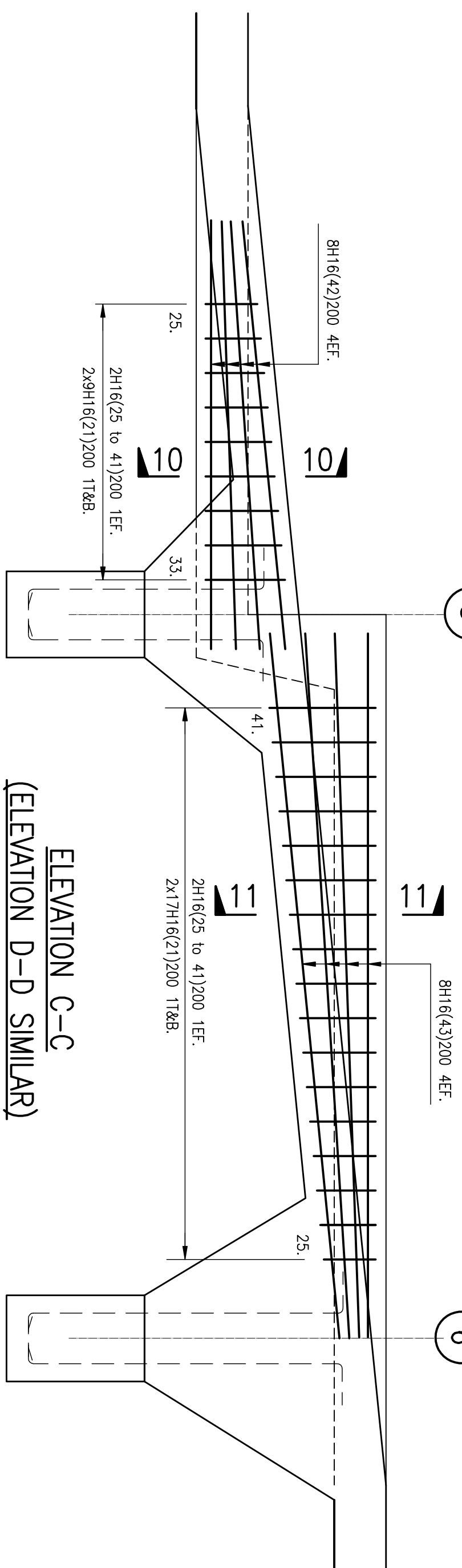
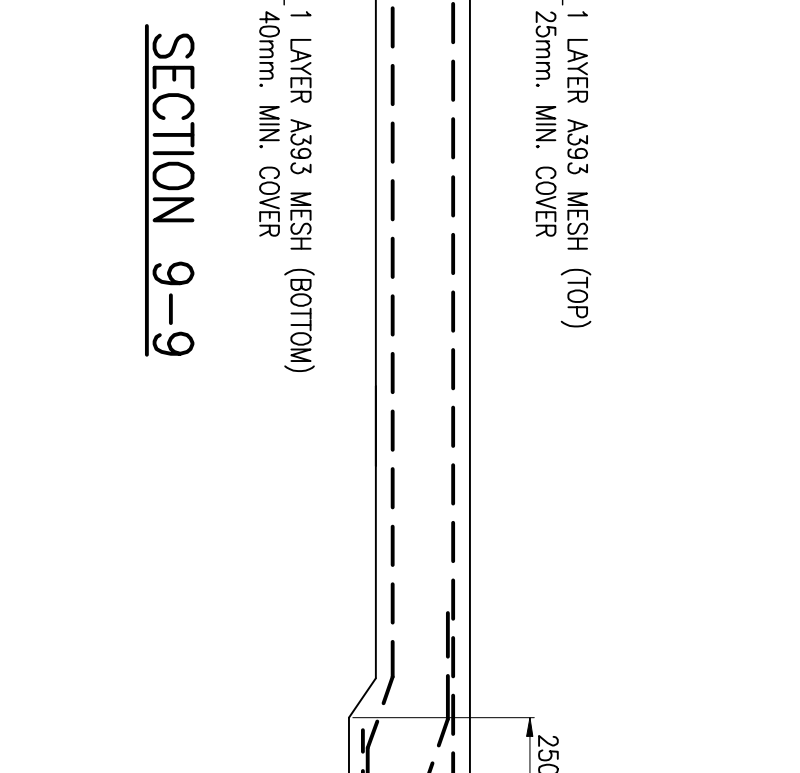
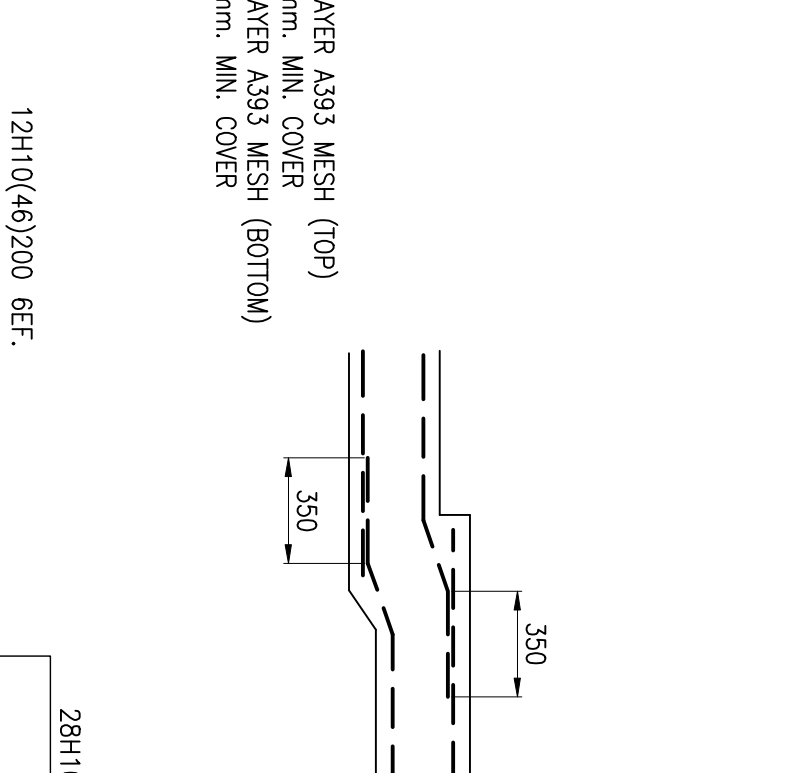
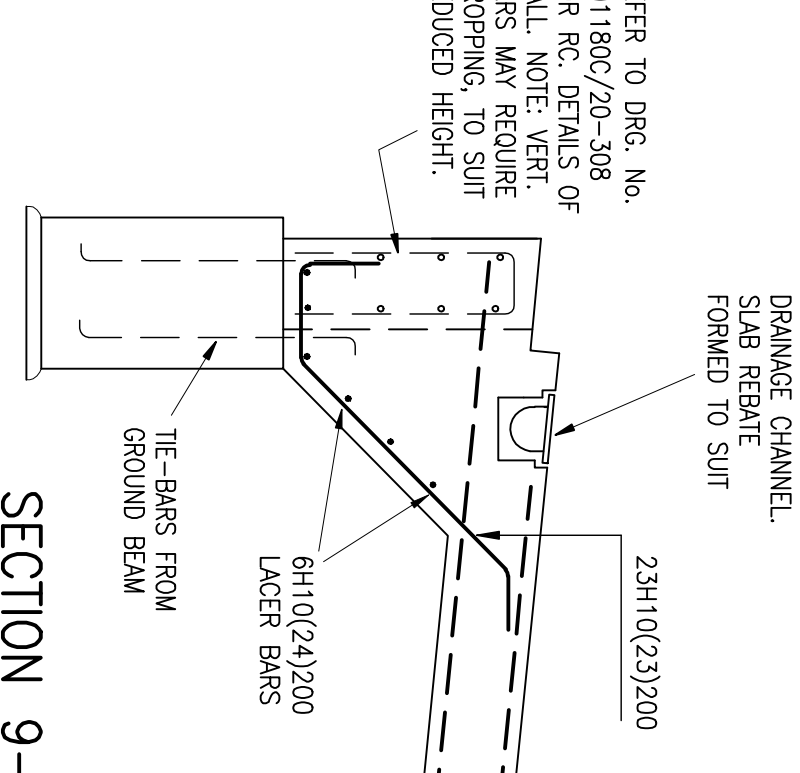
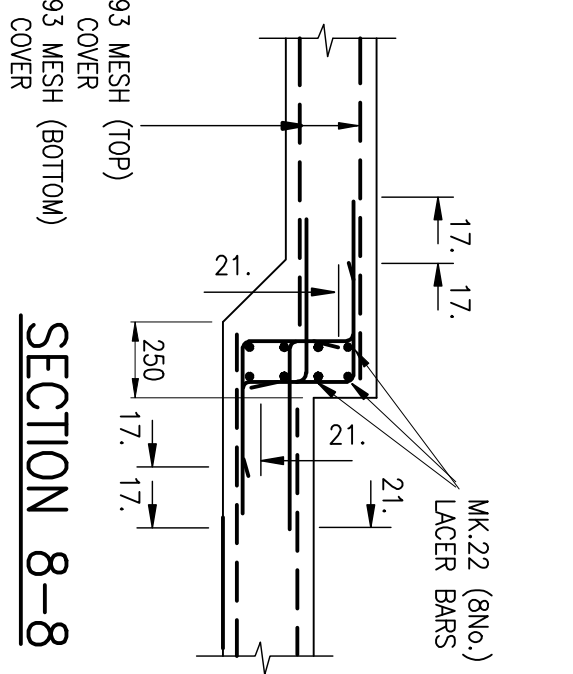
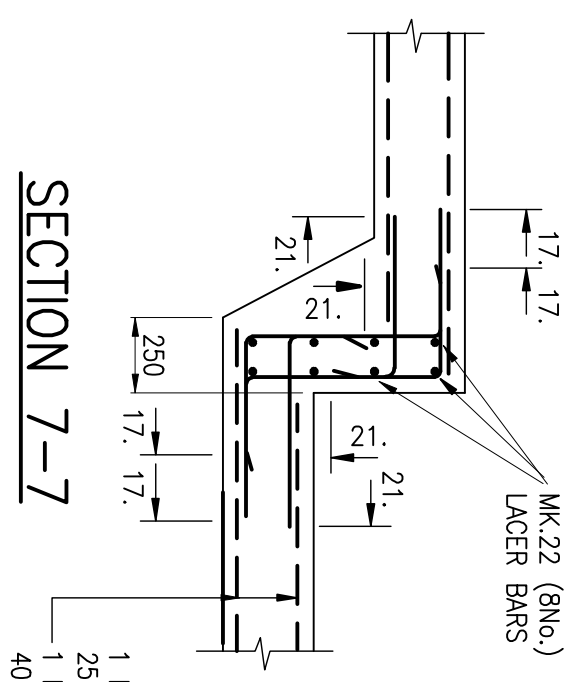
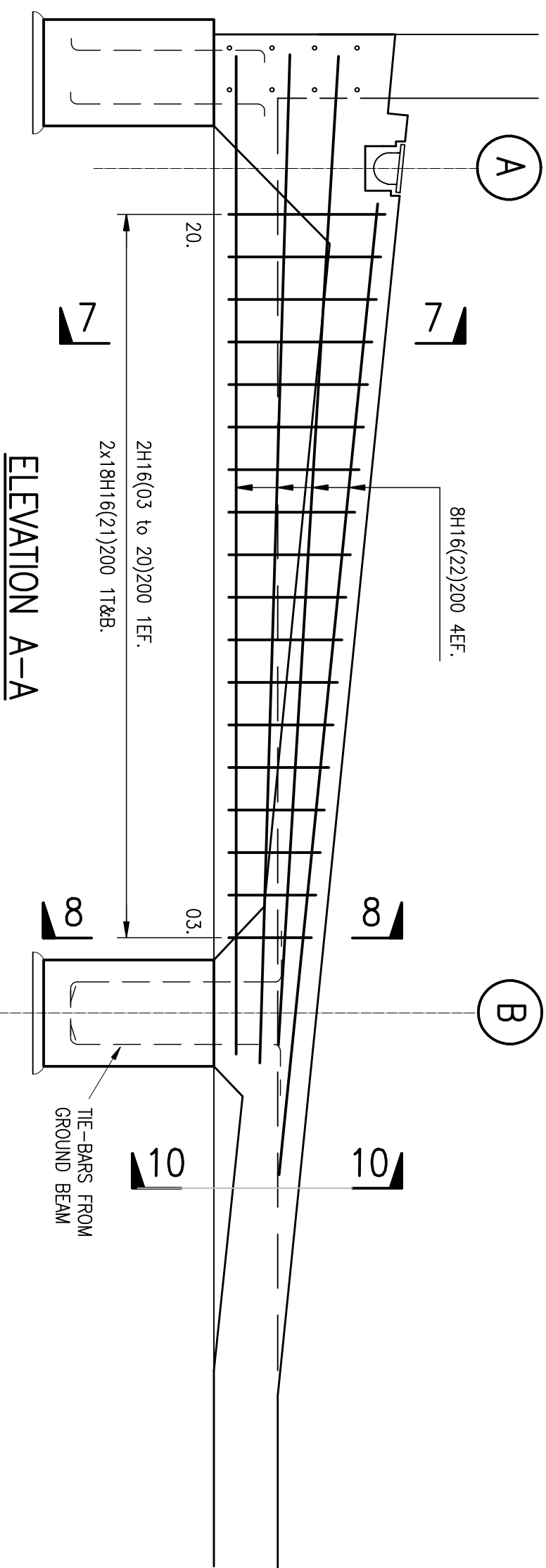
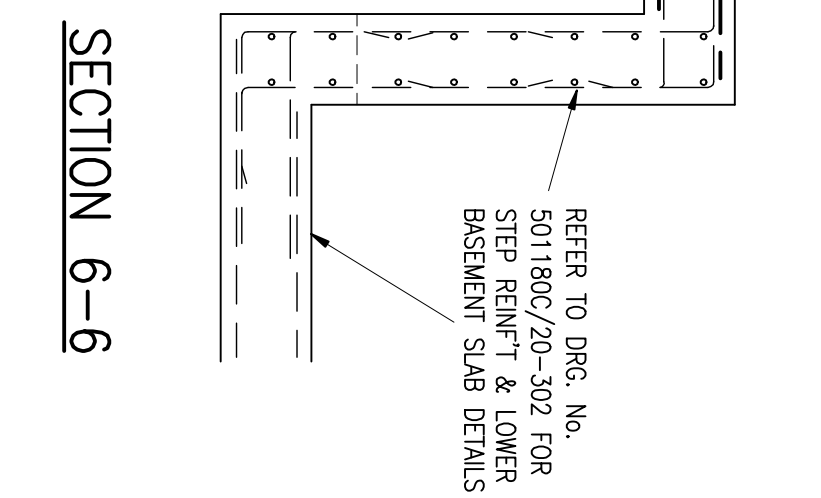
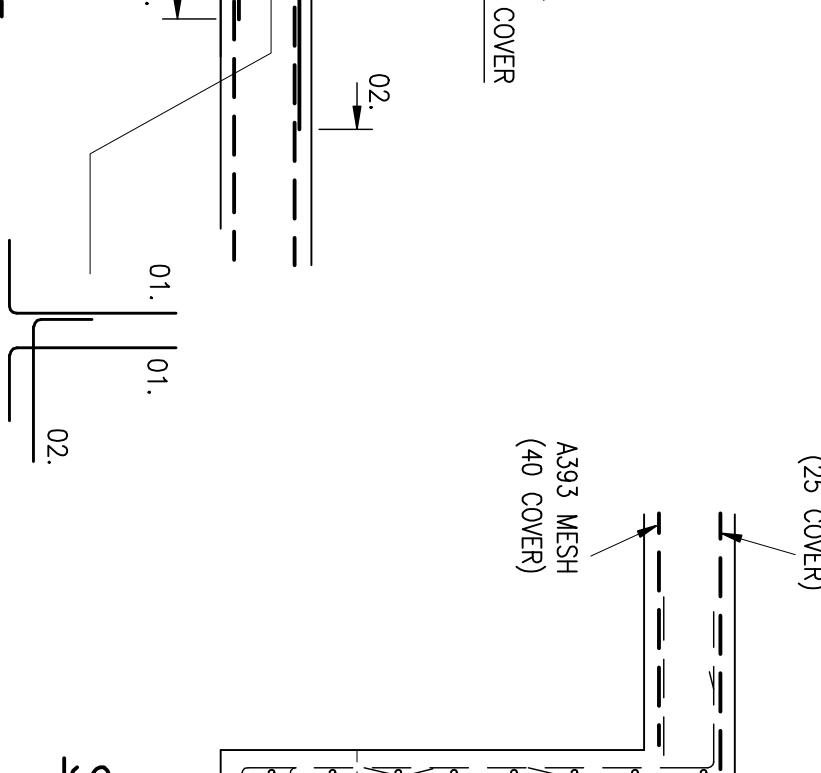
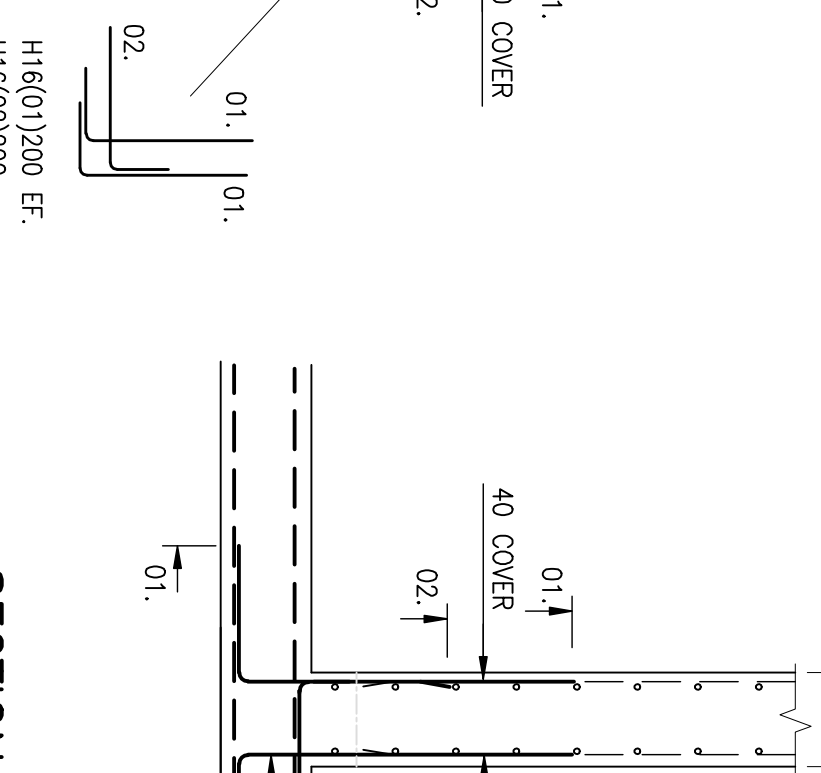
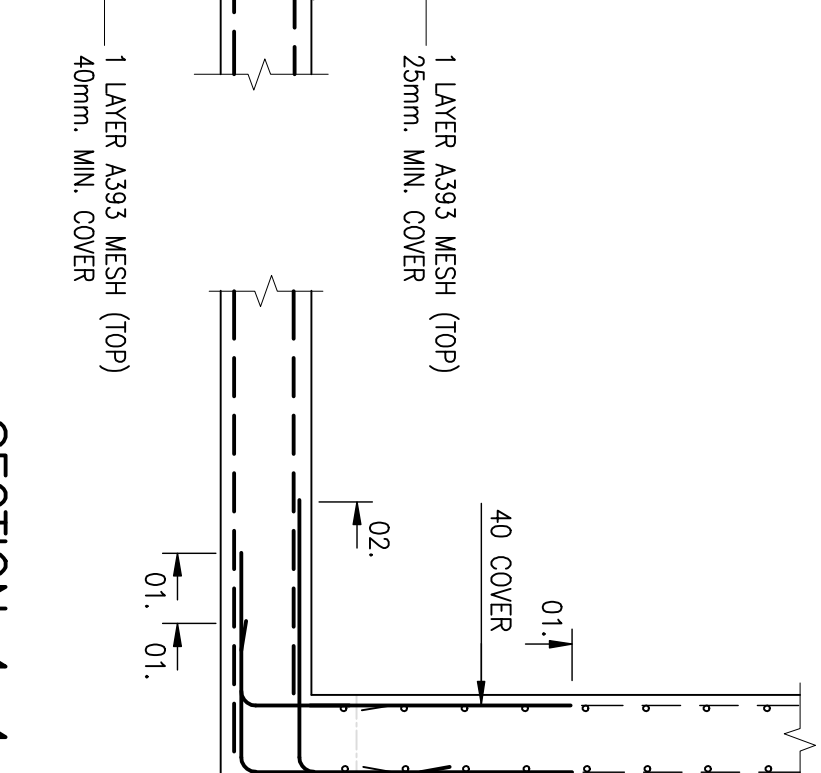
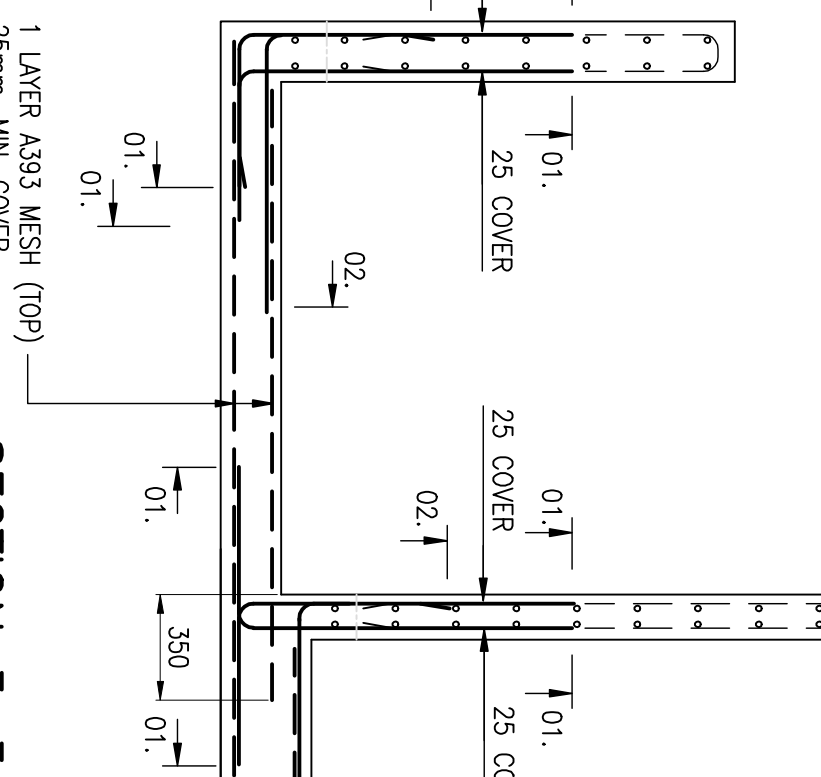
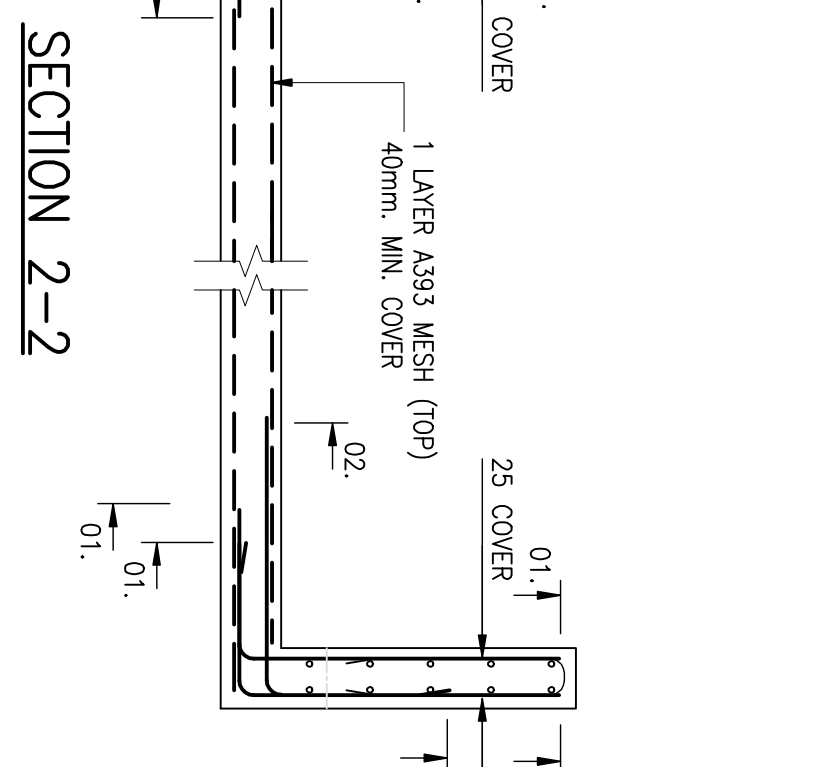
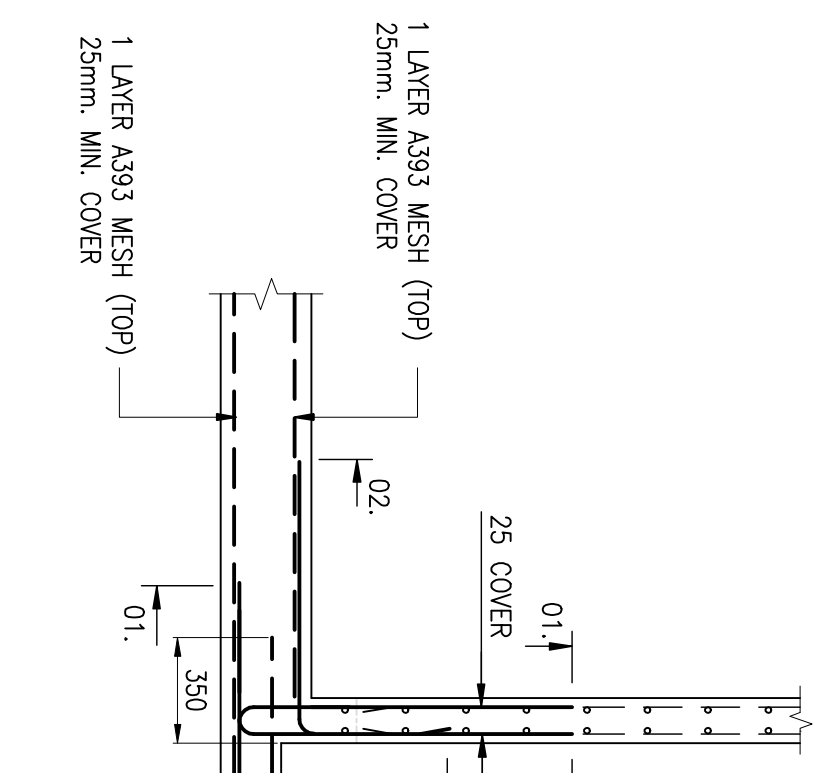
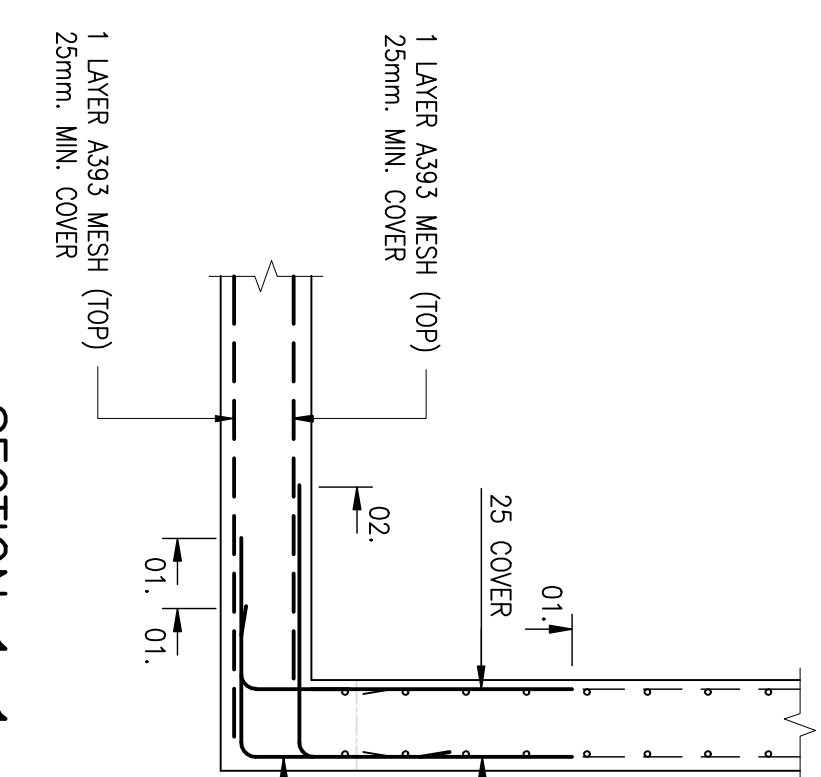
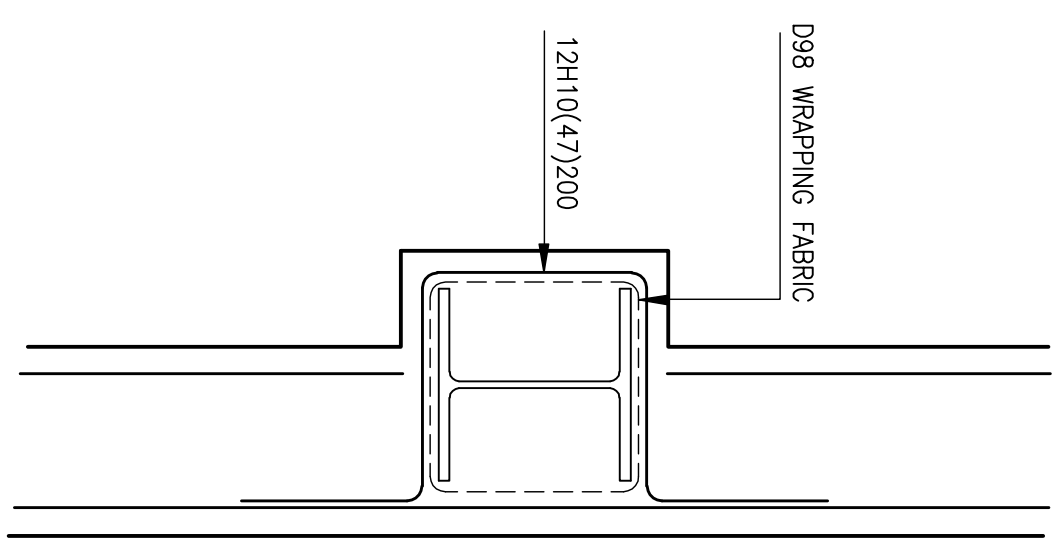
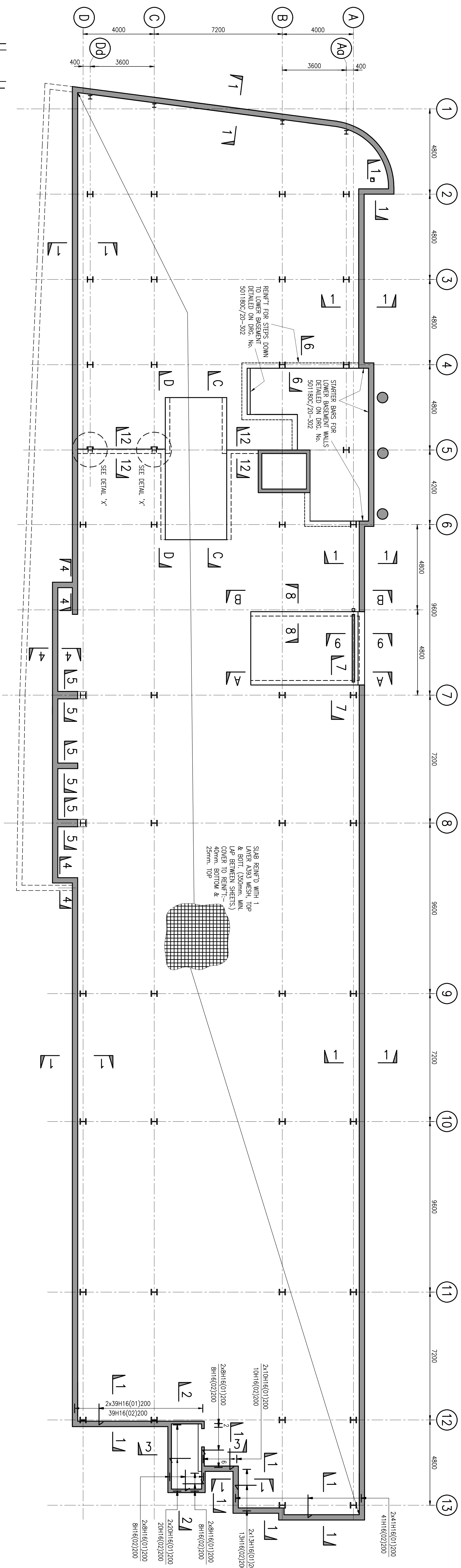


## NOTES

1. ALL MATERIALS AND WORKMANSHIP TO COMPLY WITH S.E.C. SPECIFICATION. REINFORCERS SHALL BE SPECIFICALLY APPROVED BY THE ARCHITECTS IN ACCORDANCE WITH THE SPECIFICATION FOR REINFORCED CONCRETE ANCHORED TO REINFORCED BRITISH STANDARD.
2. THIS DRAWING TO BE READ IN CONJUNCTION WITH ALL RELEVANT ARCHITECTS AND S.E.C. CONSULTING ENGINEERS DRAWINGS.
3. ALL REINFORCING IS LISTED ON BAR SCHEDULE No. 95, 501/8002/20-305, 01.
4. COVER TO REINFORCEMENT:-  
40mm TO OUTER FACE OF WALLS &  
25mm TO INTERNAL FACES  
40mm TO BOTTOM REINFT IN SLAB &  
25mm TO TOP STEEL.



IT IS THE CONTRACTORS RESPONSIBILITY TO CHECK ALL SETTING OUT DIMENSIONS AND REPORT ANY DISCREPANCY TO THE STRUCTURAL ENGINEER IMMEDIATELY.

CONTRACT No	DRG No
501180C	20-305

**SEJC Consulting Engineer**  
Consulting Structural & Civil Engineers

## RC. DETAILS OF BASEMENT SLAB

SCALES 1:50, 1:25 (@A